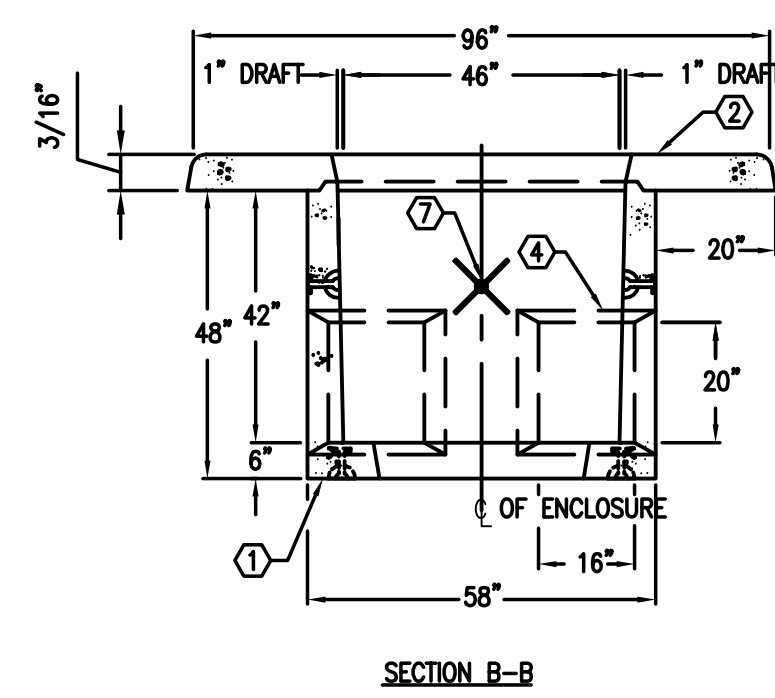
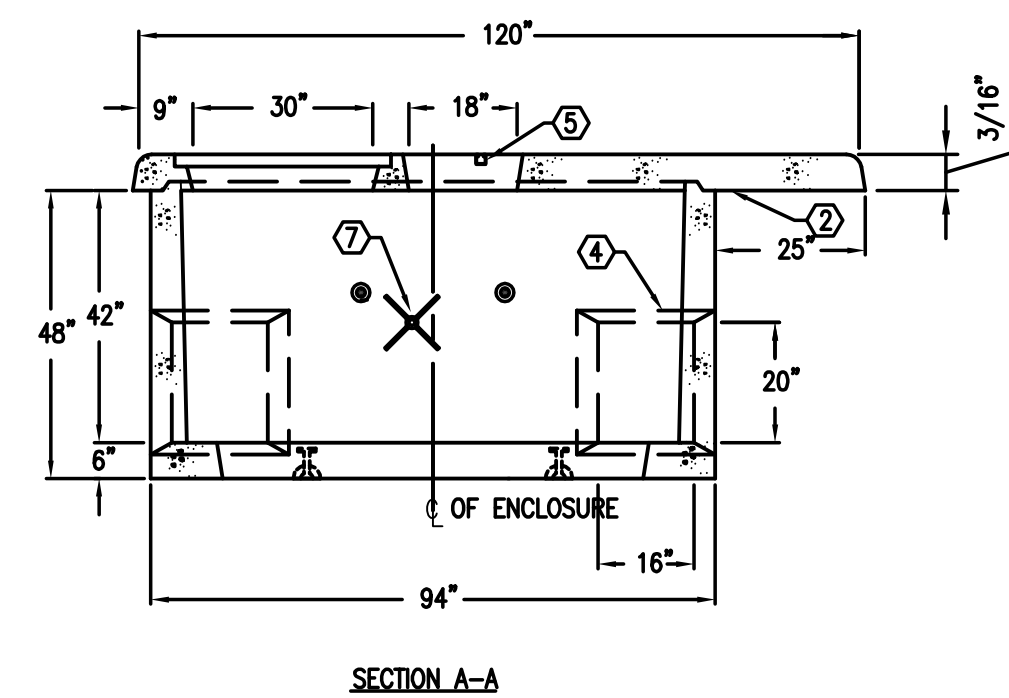
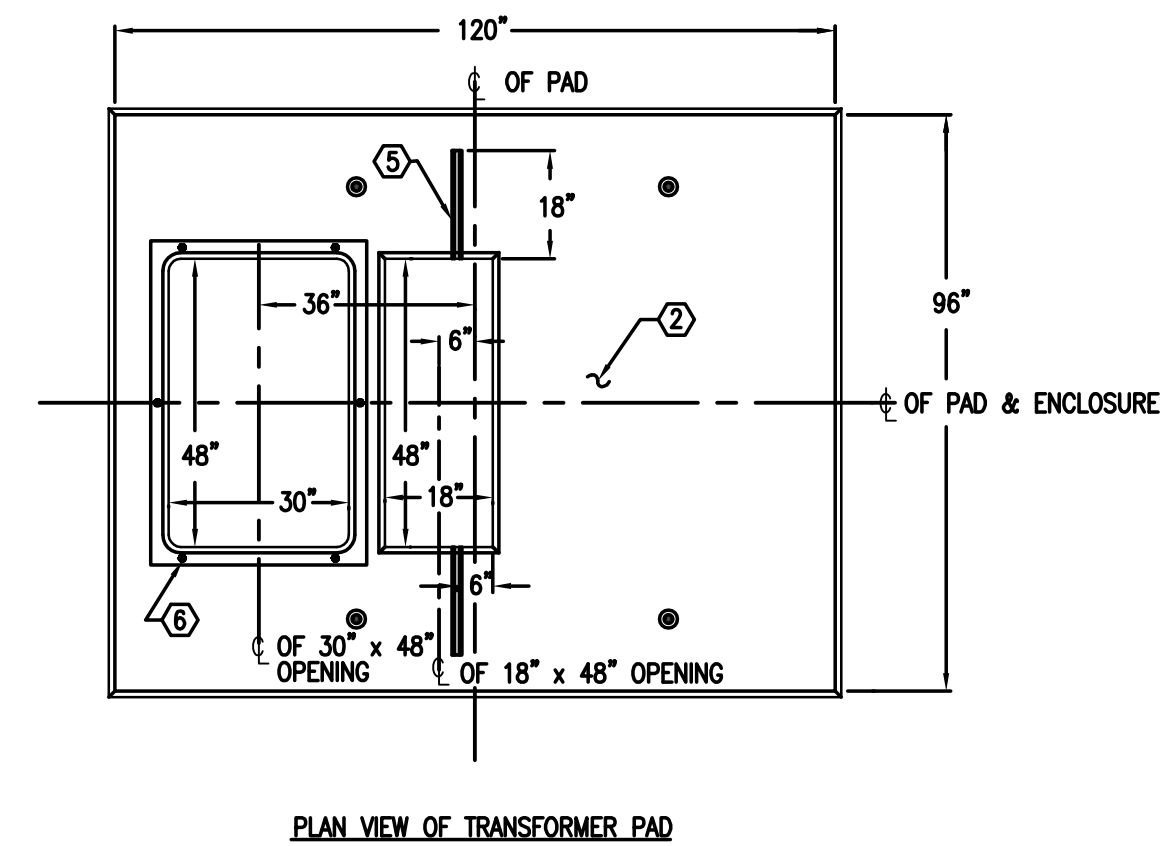
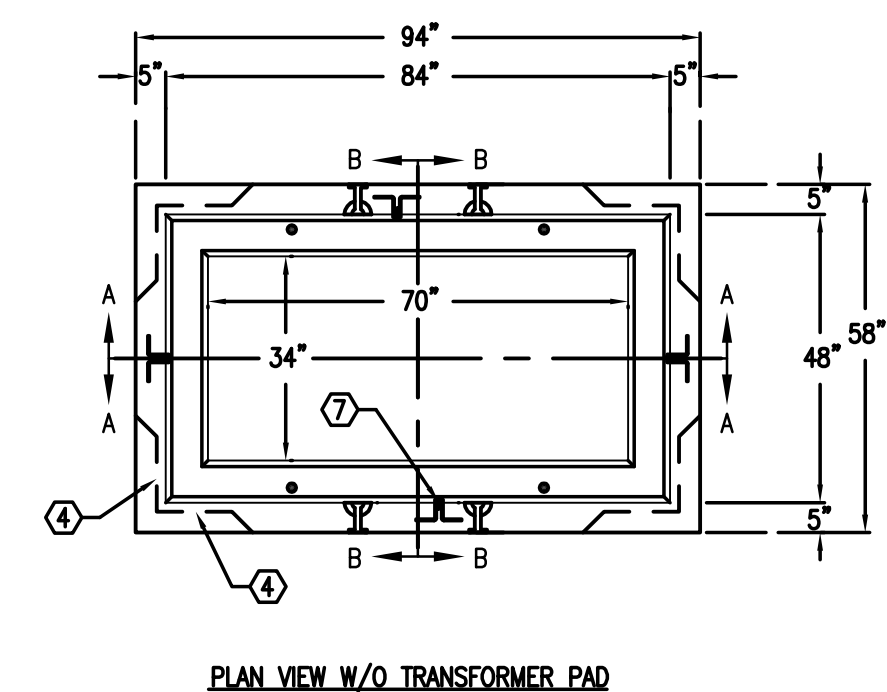
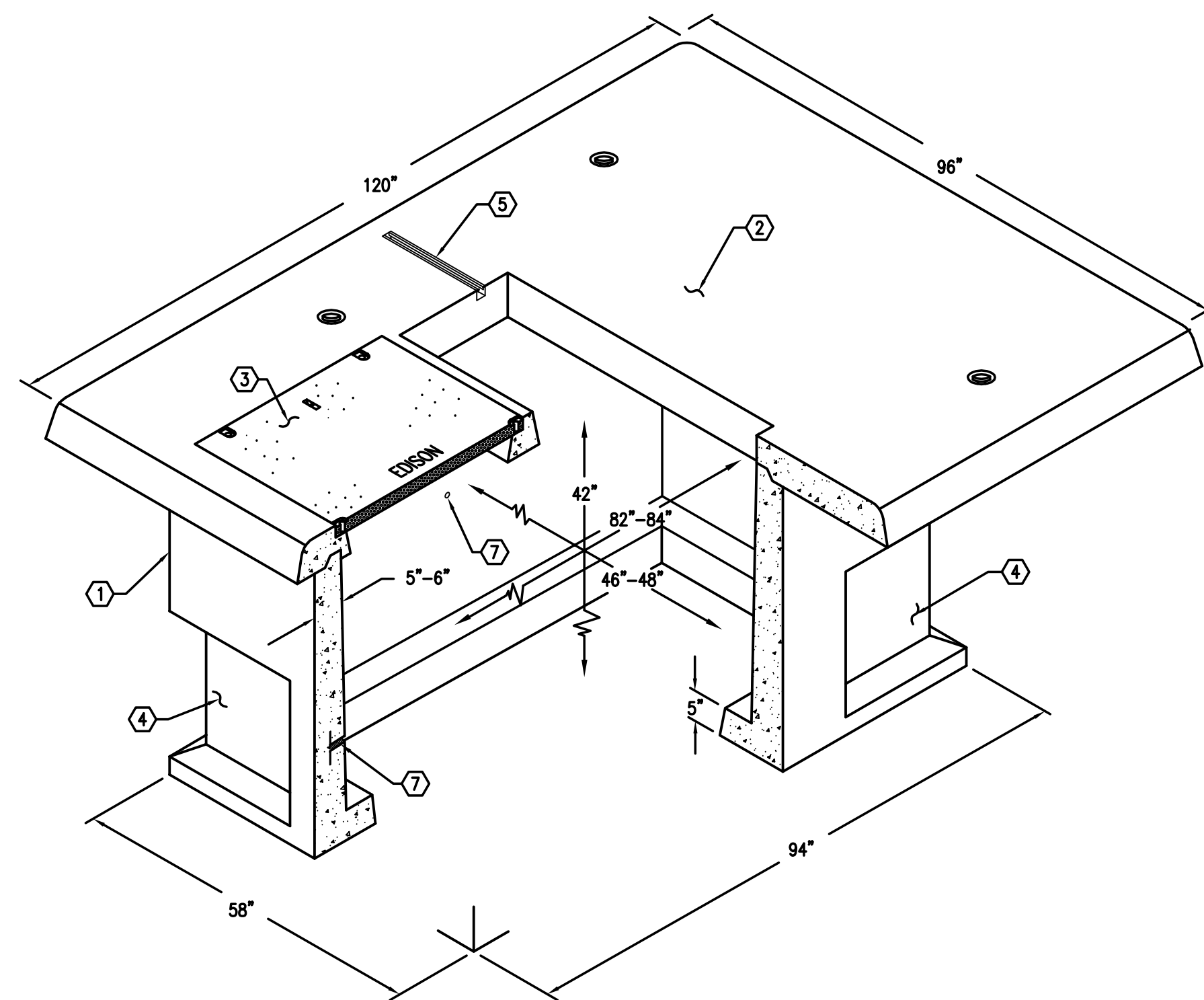


8'-0" x 10'-0" EDISON TRANSFORMER PAD W/4'-0" x 7'-0" ENCLOSURE x 42" DEEP

NOTES:

- TRANSFORMER PAD AND ENCLOSURE ARE DESIGNED FOR PARKWAY LOADING PER CALCS. #31854 USING 5,500 PSI. COMPRESSIVE STRENGTH CONCRETE.
- COVER IS DESIGNED FOR PARKWAY LOADING.
- VAULT TO BE PLACED ON A MIN. 6" BASE OF CRUSHER RUN FOR EVEN LOAD DISTRIBUTION AND EASE OF INSTALLATION.
- MINIMUM EXCAVATION SIZE: 5'-6" x 8'-6" x DEPTH
- TOTAL WEIGHT OF ASSEMBLY AS SHOWN IS 11,348 Lbs.

- ① SB47-B42-11, 42" BOTTOM SECTION, WT. 6,400 Lbs.
- ② PD96120-T6-11, 6" COVER W/ (6) 1/2" x 2 1/2" P.H.S.S. BOLT W/ CAPTIVE WASHERS
- ③ RPM "ENDSOR" 1 PEECE DOWNER W/ (6) 1/2" x 2 1/2" P.H.S.S. BOLT W/ CAPTIVE WASHERS
- ④ 2" LIFT EYES, WT. 109 Lbs.
- ⑤ 16" x 20" NOKOUT/ 3 1/2" DEEP. DRAFT AS FOLLOWS: T=2", S1=3 1/2", S2=3 1/2", B=2", BOTTOM SECTION (6) SHELL MTD.
- ⑥ 1 5/8" x 1 5/8" UNISTRUT x 18" LONG (55-21-018), TRANSFORMER PAD (2) TABLE MTD.
- ⑦ 1/2" P-35-T W/CLEAN-OUT HOLE, TRANSFORMER PAD (6) FRAME MTD. ☉
- ⑧ 1" GALVANIZED COIL THREADED INSERT, BOTTOM SECTION (4) CORE MTD. ✗



1 JENSEN PRECAST #K810-SB42-11
SCE XFMR PAD AND SLAB BOX DETAIL

PROJECT



CLIENT



STATE OF CALIFORNIA
DEPARTMENT OF GENERAL SERVICES
REAL ESTATE SERVICES DIVISION
PROJECT MANAGEMENT BRANCH
400 R STREET, SUITE 5100
SACRAMENTO, CA 95814
PROJECT DIRECTOR : REG EDEN
TELEPHONE : (916) 376-1719

DESIGNER

DMJM H&N | AECOM

99 TOWN & COUNTRY ROAD, ORANGE CALIFORNIA 92868
714-567-2400 F: 714-543-0955 www.dmj.com

CONSULTANTS

STATUS

100%
CONSTRUCTION
DOCUMENTS
SEPT. 7, 2007

ISSUE

[illegible]

MARK	DATE	DESCRIPTION
PROJECT NO:		60004333.4000
DRAWN BY:		L. DICKENS
CHECKED BY:		C. DAVIES

KEY PLAN

SHEET TITLE

DETAILS

E-814